



San Diego County links homeless San Diegans with mental illness to supportive housing as a first step towards stability and recovery.

What is Supportive Housing?

Supportive housing is a community-based service model that provides affordable housing integrated with support services such as:

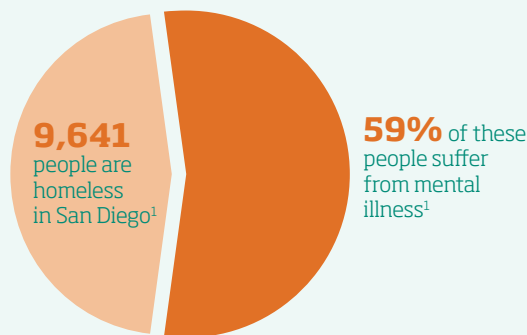
- mental health services
- primary health care
- alcohol and drug services
- case management
- social services

Supportive housing is for people who are either homeless or at high risk of becoming homeless and who are living with mental illness. They may be our brothers, sisters, parents, sons and daughters.

Individuals with mental illness are much more likely to become homeless than the

general population because their mental illness, left untreated, can disrupt their ability to maintain relationships, hold jobs, receive health care, respond to offers of help, or maintain occupancy. Mental illness is a major contributing factor to their homelessness. This model helps these individuals gain stability and live more productive lives.

The County of San Diego's Behavioral Health Services Division (BHS) partners with service providers and housing developers to provide supportive housing and break the stigmas of homelessness and mental illness.



Why it works

Working with its partners, BHS designates a small percentage of units within affordable housing developments for qualified individuals who have psychiatric disabilities and who are homeless or at risk of homelessness and are in Full Service Partnership (FSP) programs administered by BHS. Tenants referred by the FSP to these designated units are also provided with ongoing social and mental health services that are essential to their recovery and occupancy. In addition, the tenants are given educational opportunities, enabling them to become more self-sufficient.

All applicants are screened and selected for occupancy. Supportive housing tenants hold their own leases, contribute to their rents, and are subject to the same rules and regulations as all other tenants.

1. 2012 Regional Task Force on the Homeless
2. National Institute of Mental Health

HOUSING Matters.

Program successes

A stable home with integrated social and mental health services produces positive results, such as:



Supportive Housing:

- does not increase crime or vandalism in neighborhoods
- is not a temporary shelter or psychiatric facility
- does not lower property values



HOUSING MATTERS because home is where recovery begins

If you know of someone who may benefit from supportive housing, or to learn more about why Housing Matters and the County of San Diego's supportive housing developments, please visit www.HousingMattersSD.org.

Supportive Housing Matters because it works. It helps people get treatment for their illnesses and stop living on the streets. It helps communities save money on services for the chronically ill homeless.

Housing Matters funded by the County of San Diego and produced by:

Cook + Schmid

3033 Fifth Avenue, Suite 200
San Diego, CA 92103
(619) 814-2370
CookandSchmid.com

HousingMattersSD.org



09/2012